



*Value***Craft**

Homes Designed for
Affordability and Lasting Value

Quality Manufactured Home Plans from 800 s.f. to 1795 s.f.

*Value***Crafted** with pride for you and your family...



SINGLE SECTION HOMES

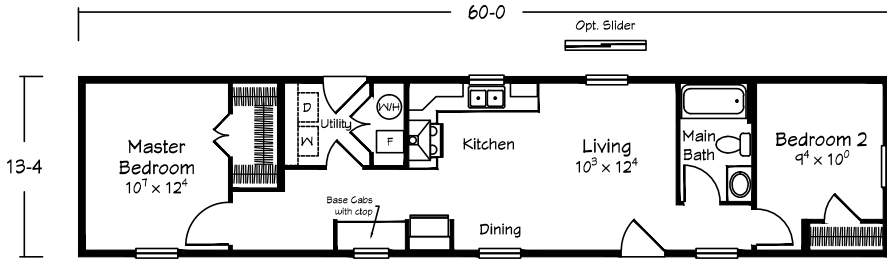


MULTI-SECTION HOMES



GABLE ENTRY MULTI-SECTION HOMES

SINGLE SECTION HOMES



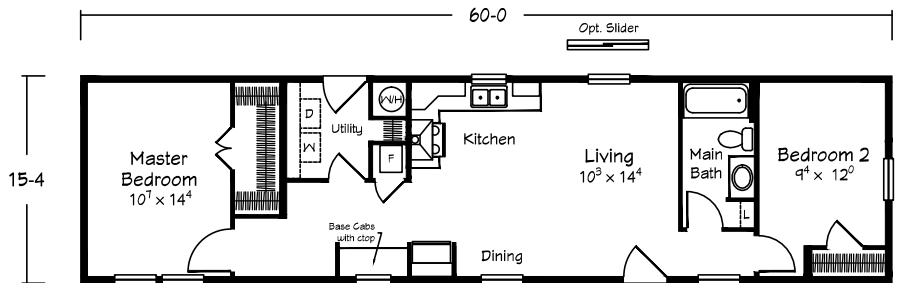
Dogwood
Model 1460

800 sq. ft. · 2 BRs · 1 Bath

Dogwood

Model 1660

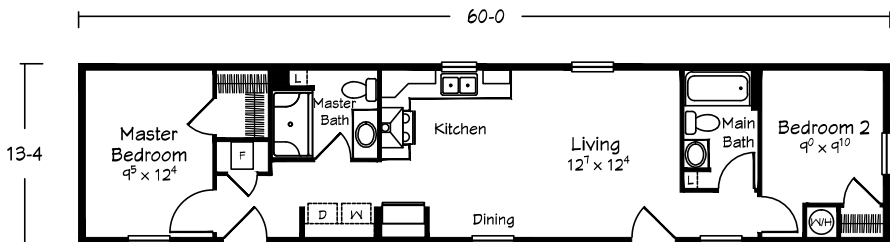
920 sq. ft. · 2 BRs · 1 Bath



Dogwood II

Model 1460

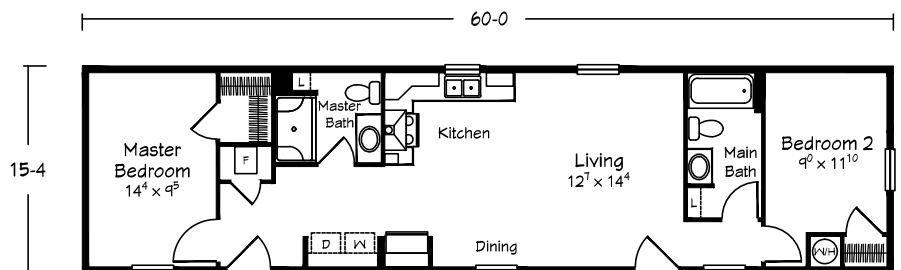
800 sq. ft. · 2 BRs · 2 Baths



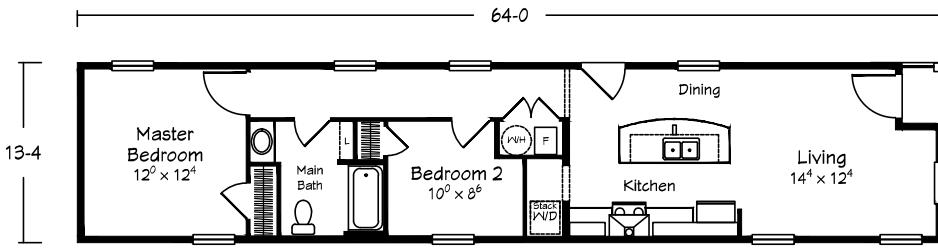
Dogwood II

Model 1660

920 sq. ft. · 2 BRs · 2 Baths



SINGLE SECTION HOMES



Cypress

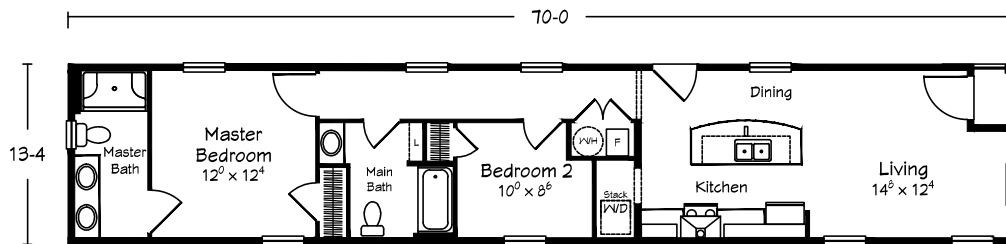
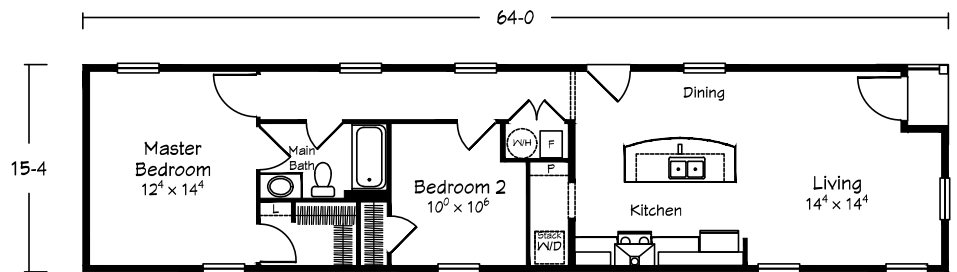
Model 1464

853 sq. ft. · 2 BRs · 1 Bath

Cypress

Model 1664

981 sq. ft. · 2 BRs · 1 Bath



Cypress II

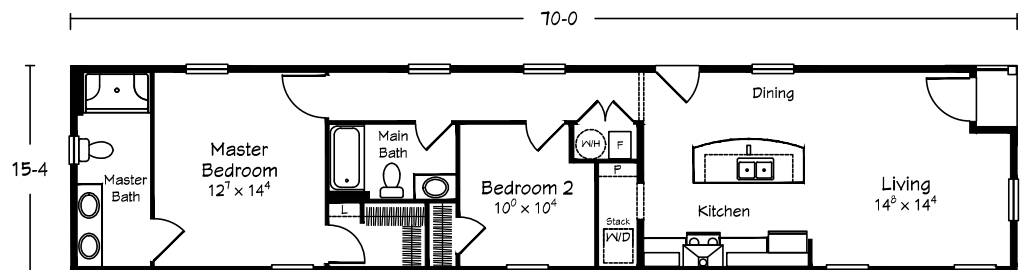
Model 1470

933 sq. ft. · 2 BRs · 2 Baths

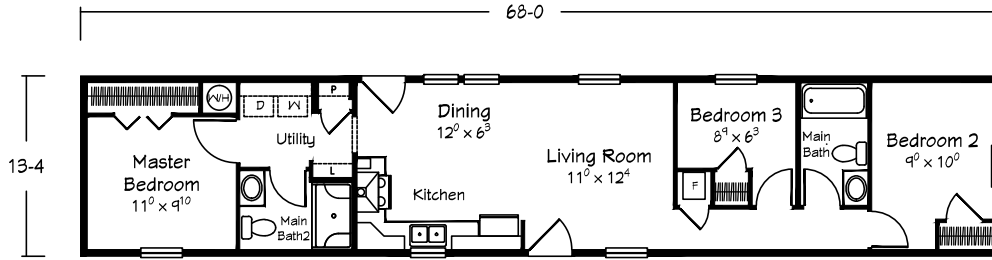
Cypress II

Model 1670

1073 sq. ft. · 2 BRs · 2 Baths



SINGLE SECTION HOMES



Birch

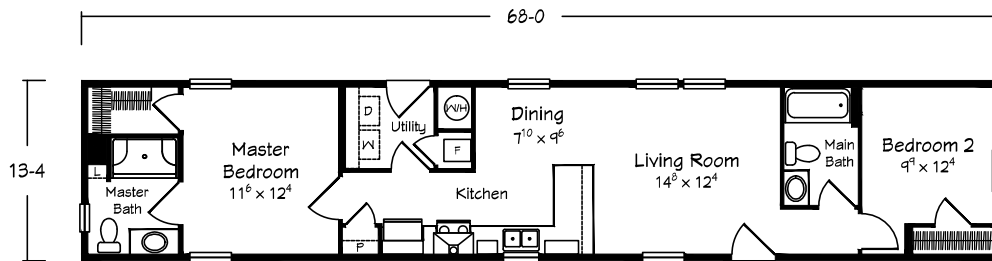
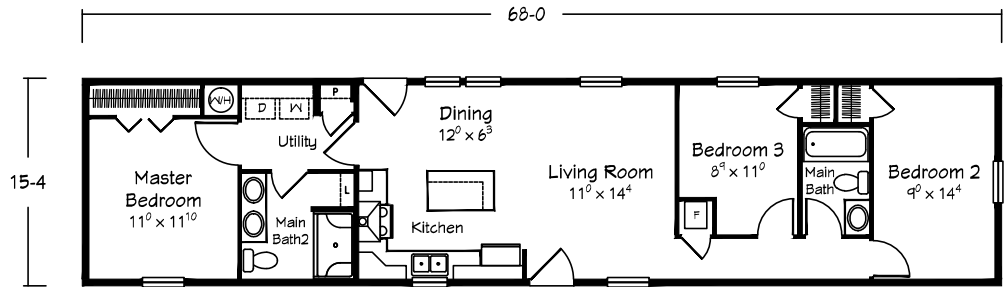
Model 1468

906 sq. ft. · 3 BRs · 2 Baths

Birch

Model 1668

1042 sq. ft. · 3 BRs · 2 Baths



Oak

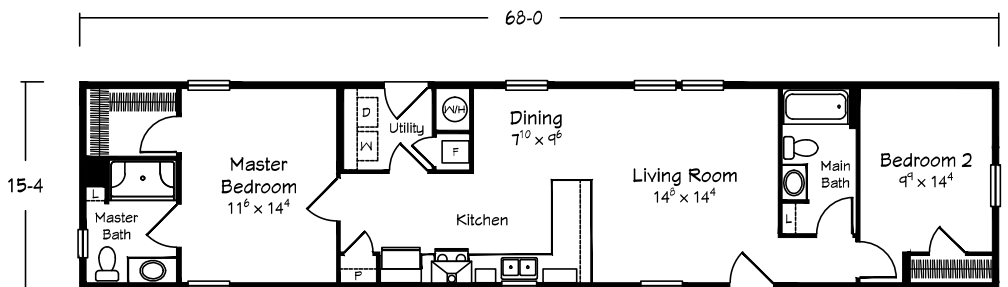
Model 1468

906 sq. ft. · 2 BRs · 2 Baths

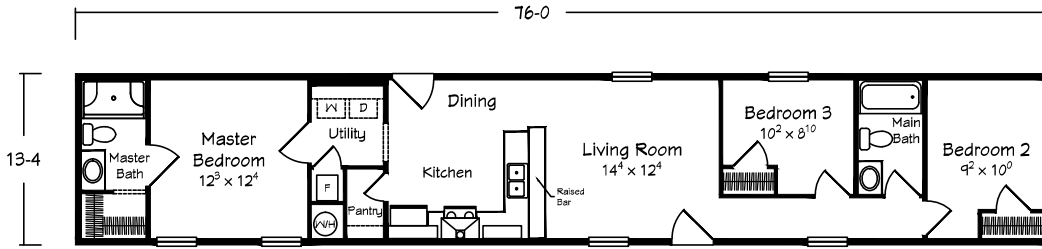
Oak

Model 1668

1042 sq. ft. · 2 BRs · 2 Baths



SINGLE SECTION HOMES



Maple

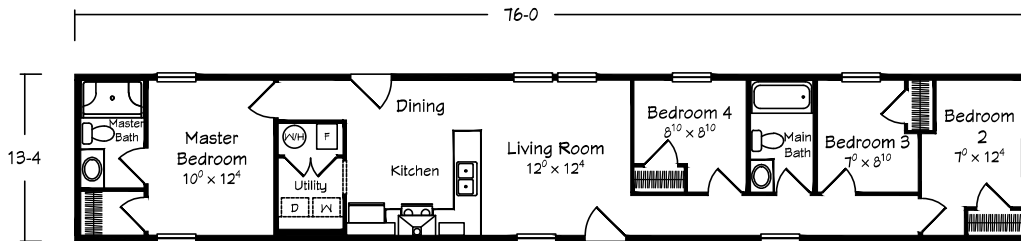
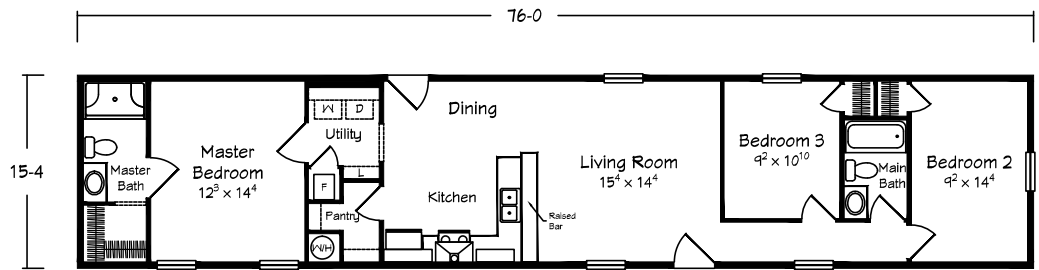
Model 1476

1013 sq. ft. · 3 BRs · 2 Baths

Maple

Model 1676

1165 sq. ft. · 3 BRs · 2 Baths



Redwood

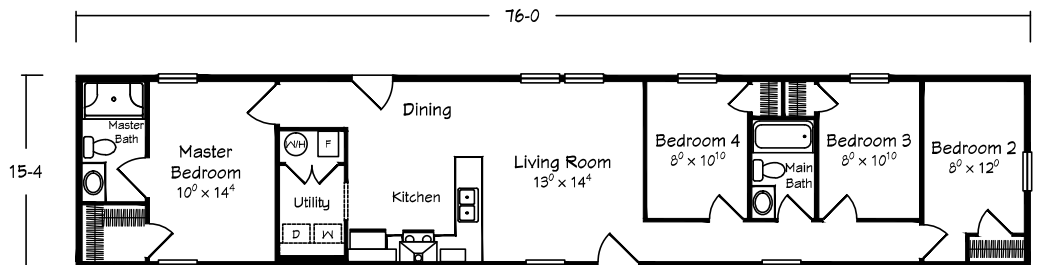
Model 1476

1013 sq. ft. · 3 BRs · 2 Baths

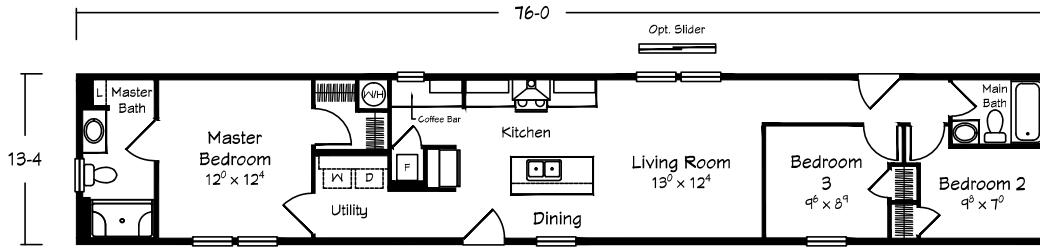
Redwood

Model 1676

1165 sq. ft. · 3 BRs · 2 Baths



SINGLE SECTION HOMES



Willow

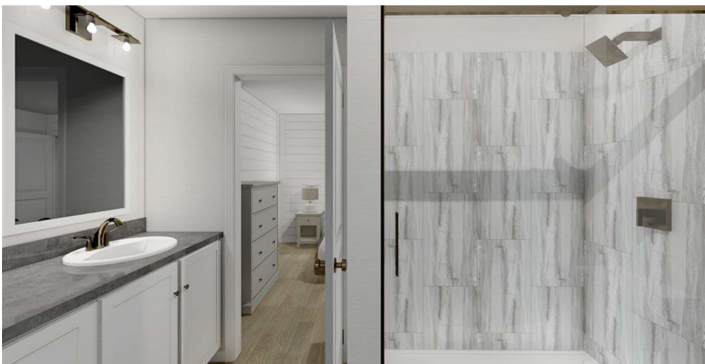
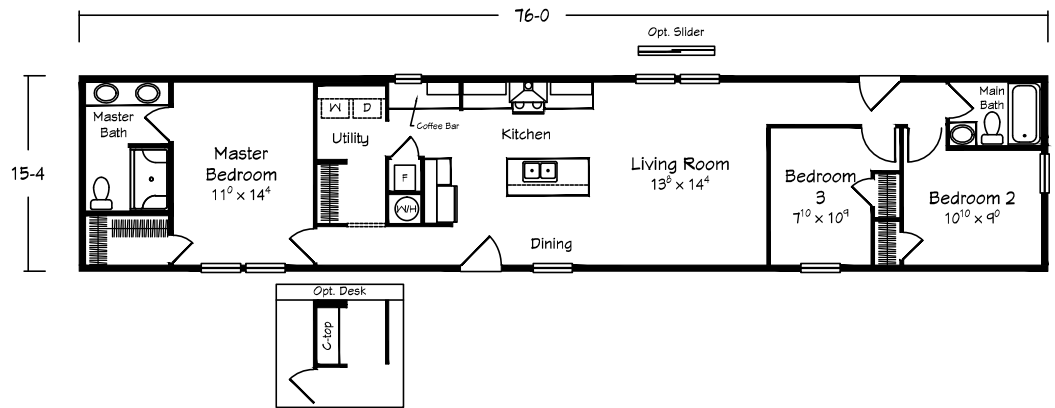
Model 1476

1013 sq. ft. · 2 BRs · 2 Baths

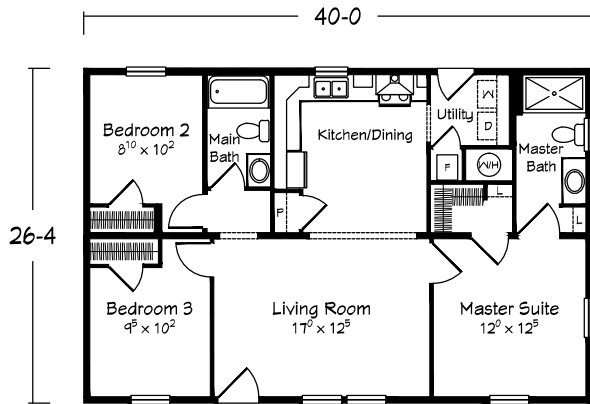
Willow

Model 1676

1165 sq. ft. · 3 BRs · 2 Baths



MULTI-SECTION HOMES



Redbud

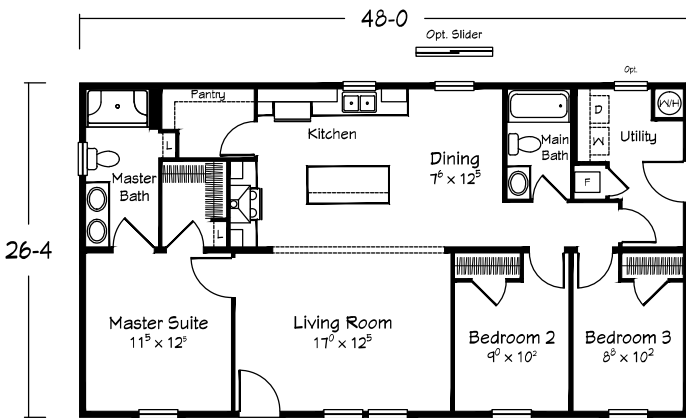
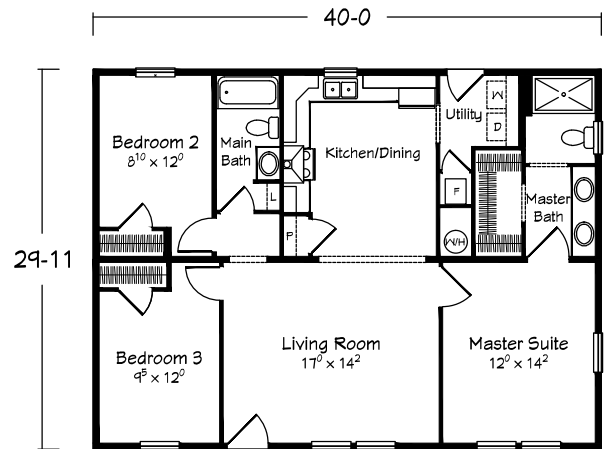
Model 2740

1053 sq. ft. · 3 BRs · 2 Baths

Redbud

Model 3140

1197 sq. ft. · 3 BRs · 2 Baths



Magnolia

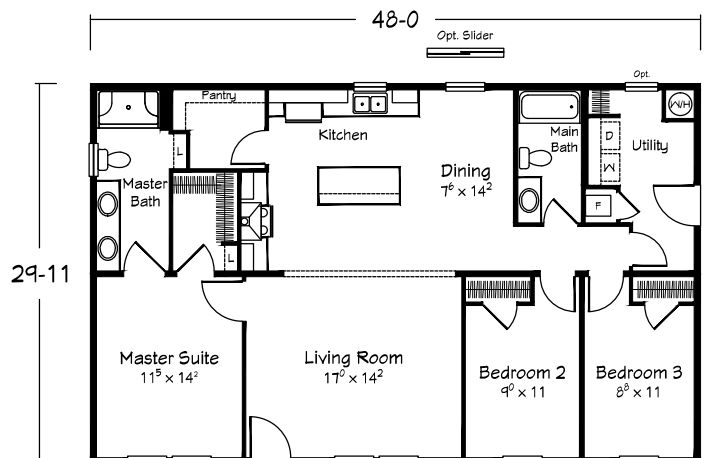
Model 2748

1264 sq. ft. · 3 BRs · 2 Baths

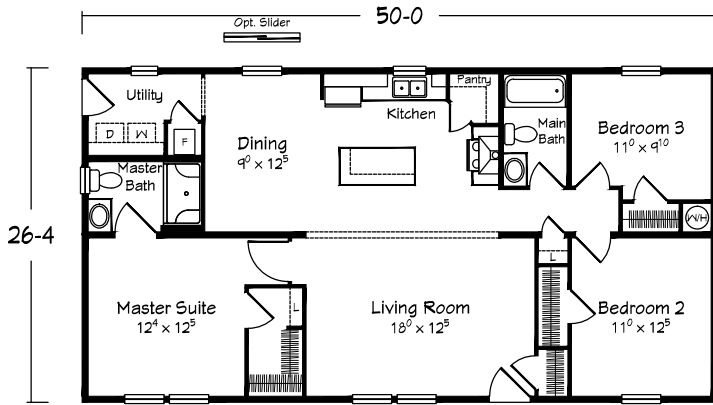
Magnolia

Model 3148

1436 sq. ft. · 3 BRs · 2 Baths



MULTI-SECTION HOMES



Mulberry

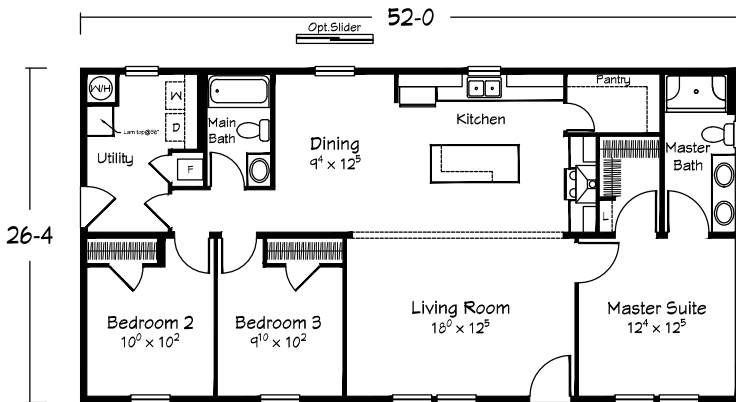
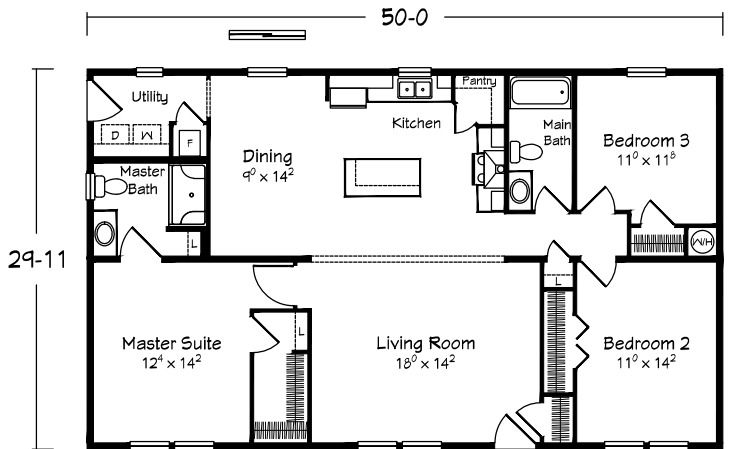
Model 2750

1316 sq. ft. · 3 BRs · 2 Baths

Mulberry

Model 3150

1496 sq. ft. · 3 BRs · 2 Baths



Hickory

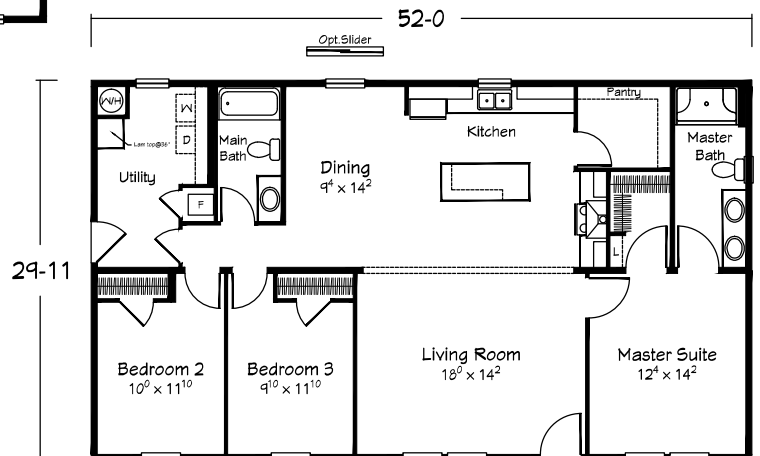
Model 2752

1369 sq. ft. · 3 BRs · 2 Baths

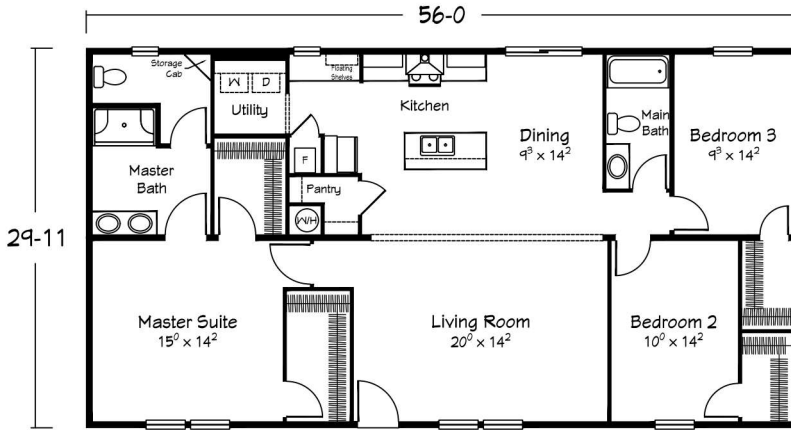
Hickory

Model 3152

1556 sq. ft. · 3 BRs · 2 Baths



MULTI-SECTION HOMES



Hemlock

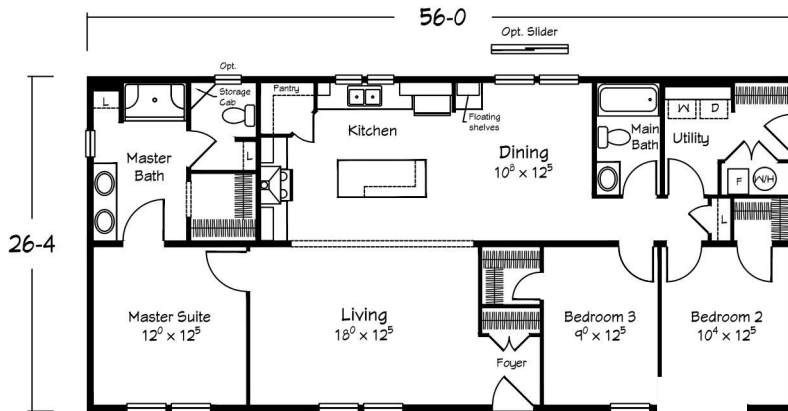
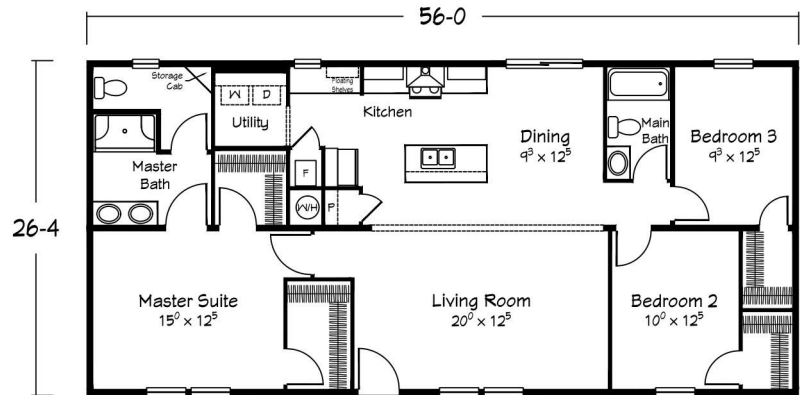
Model 2756

1475 sq. ft. · 3 BRs · 2 Baths

Hemlock

Model 3156

1676 sq. ft. · 3 BRs · 2 Baths



Juniper

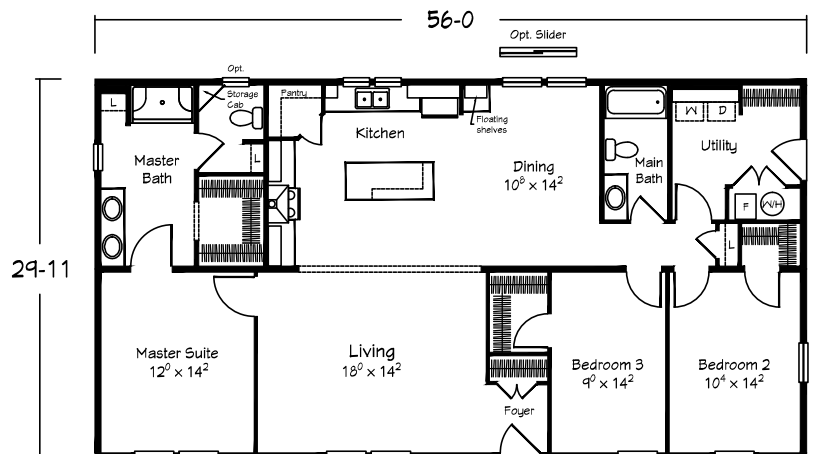
Model 2756

1475 sq. ft. · 3 BRs · 2 Baths

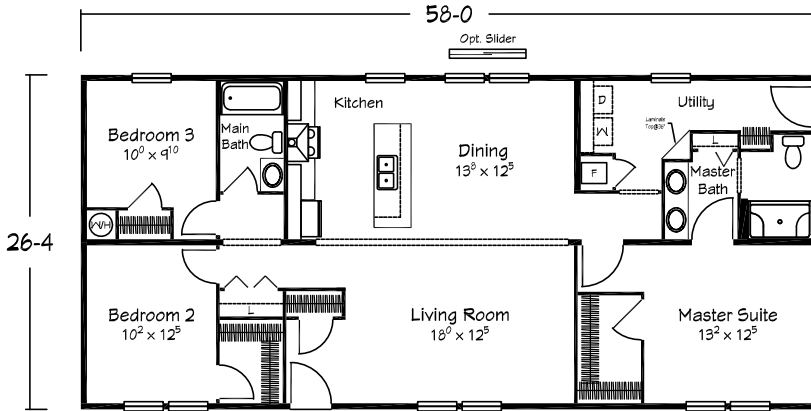
Juniper

Model 3156

1676 sq. ft. · 3 BRs · 2 Baths



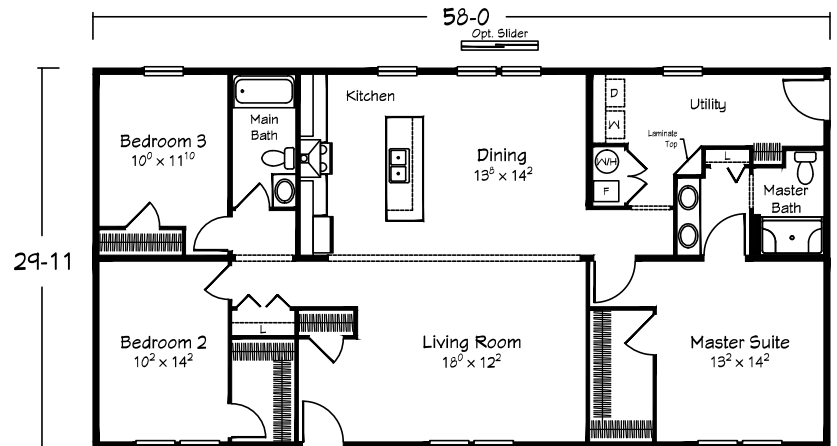
MULTI-SECTION HOMES



Spruce

Model 2758

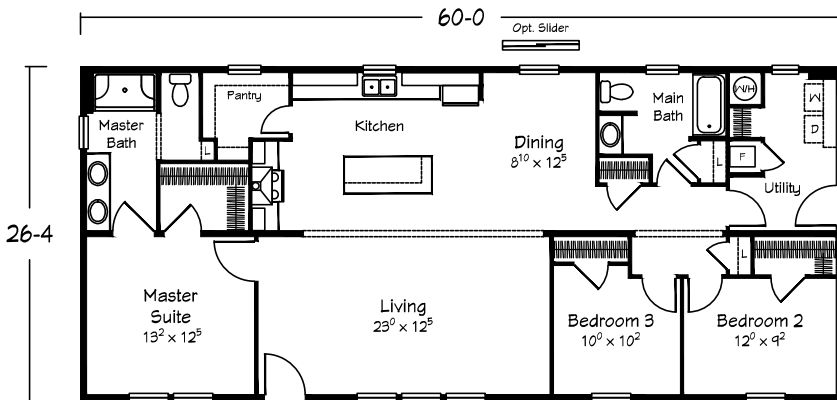
1527 sq. ft. · 3 BRs · 2 Baths



Spruce

Model 3158

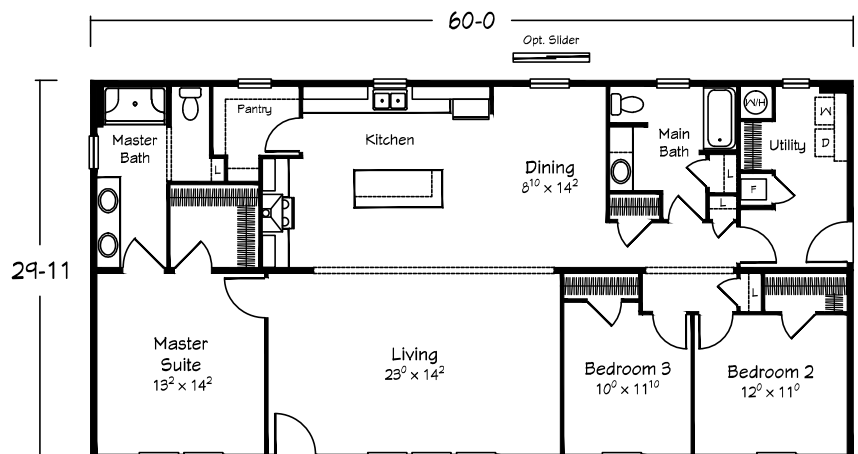
1736 sq. ft. · 3 BRs · 2 Baths



Cherry

Model 2760

1580 sq. ft. · 3 BRs · 2 Baths



Cherry

Model 3160

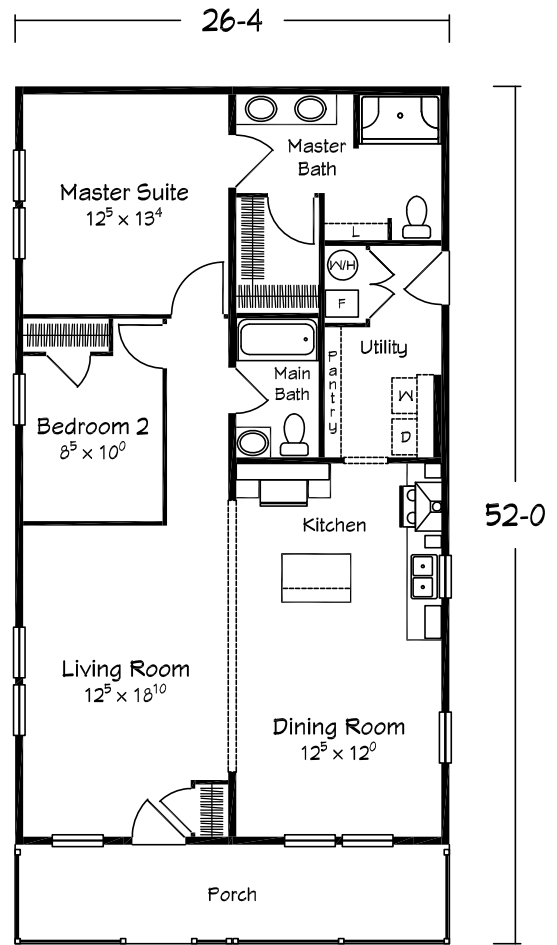
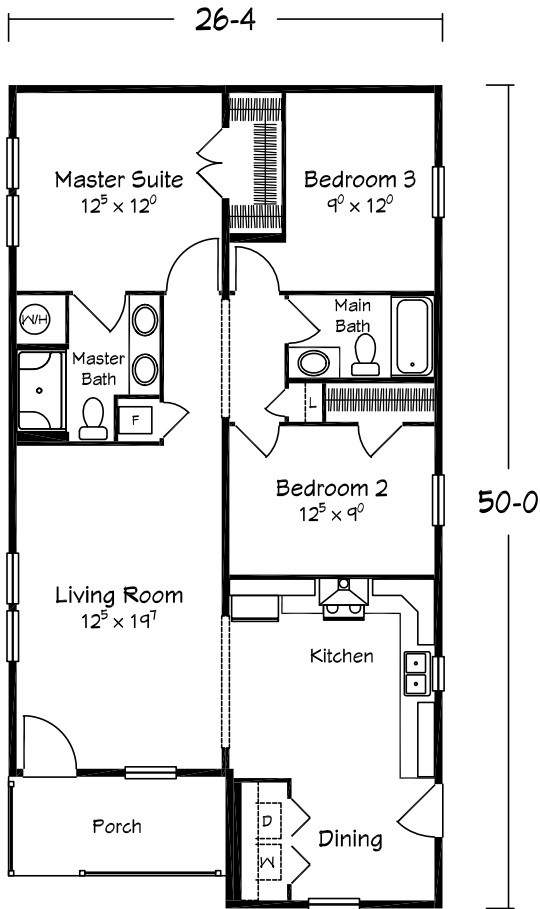
1796 sq. ft. · 3 BRs · 2 Baths

GABLE ENTRY MULTI-SECTION HOMES

Fir

Model 2750

1211 sq. ft. · Porch 79 sq. ft. · 3 BRs · 2 Baths



Elm

Model 2752

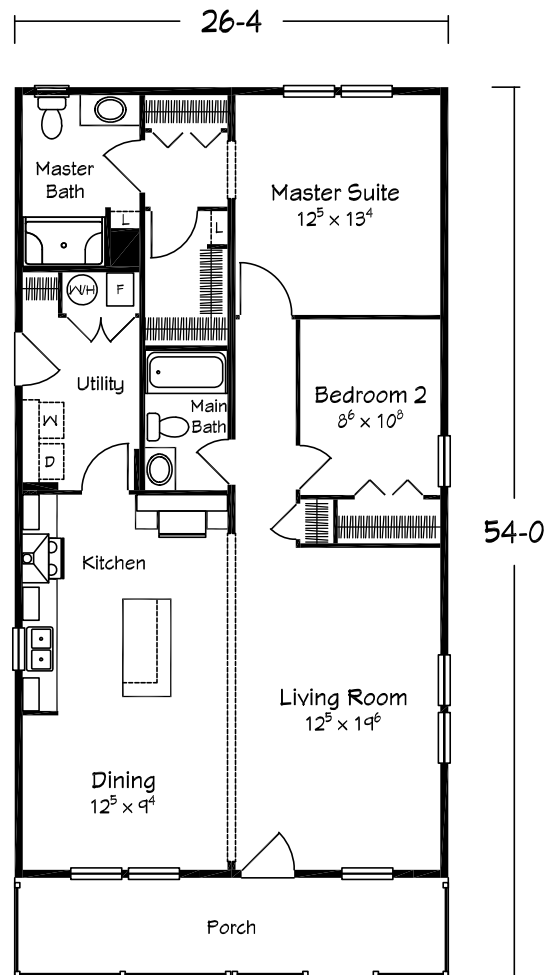
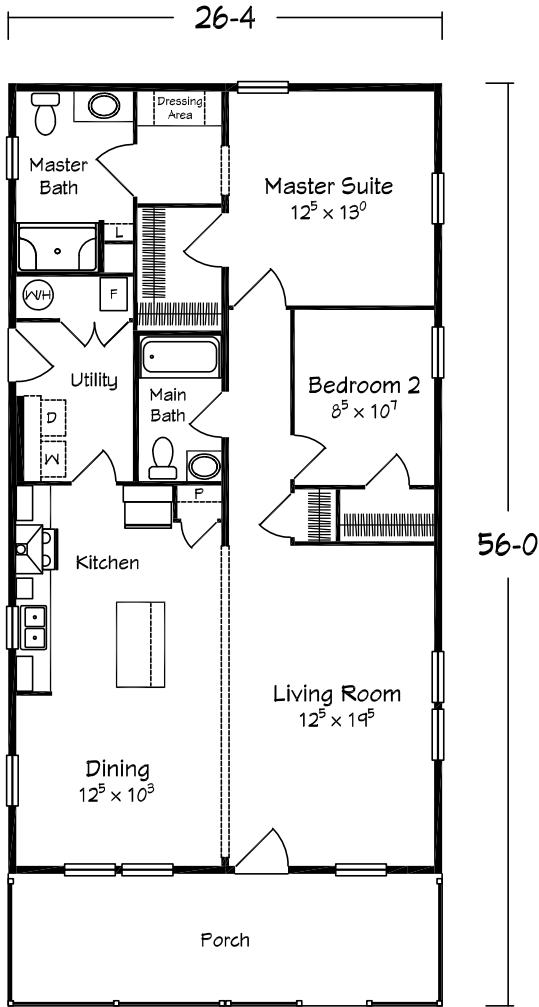
1211 sq. ft. · Porch 158 sq. ft. · 2 BRs · 2 Baths

GABLE ENTRY MULTI-SECTION HOMES

Holly

Model 2756

1264 sq. ft. · Porch 211 sq. ft. · 2 BRs · 2 Baths



Laurel

Model 2754

1264 sq. ft. · Porch 158 sq. ft. · 2 BRs · 2 Baths

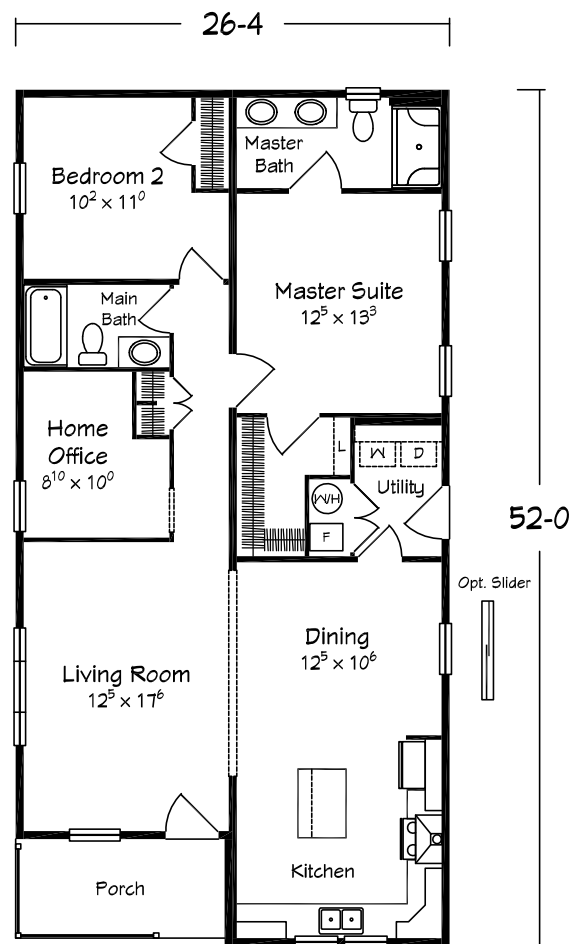
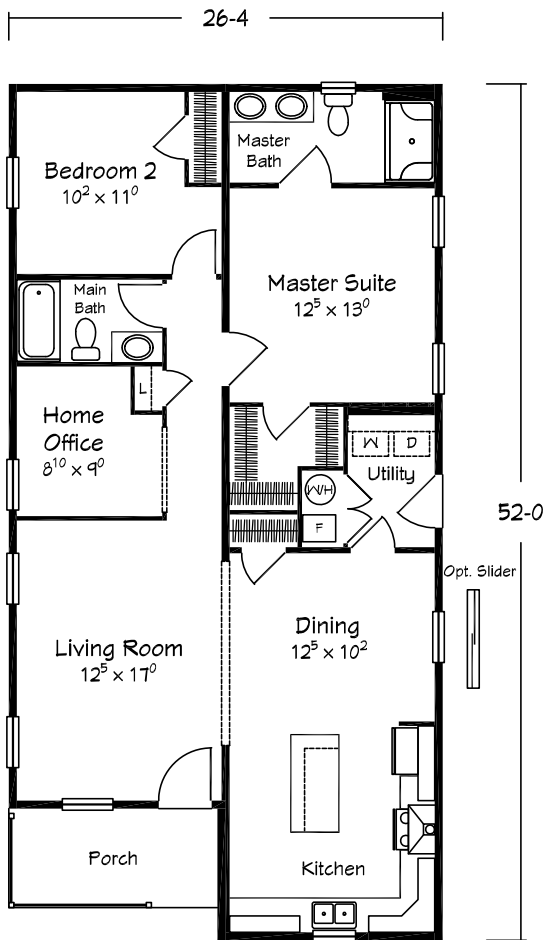
GABLE ENTRY MULTI-SECTION HOMES

Ash

Model 2752

1268 sq. ft. · Porch 76 sq. ft.

· 2 BRs · Home Office · 2 Baths



Aspen

Model 2752

1287 sq. ft. · Porch 76 sq. ft.

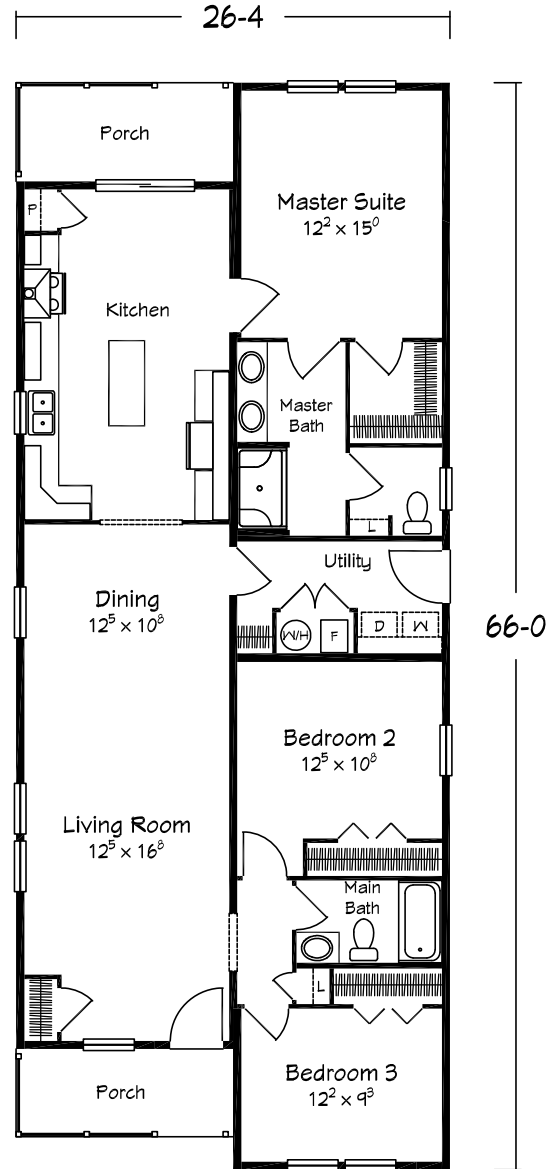
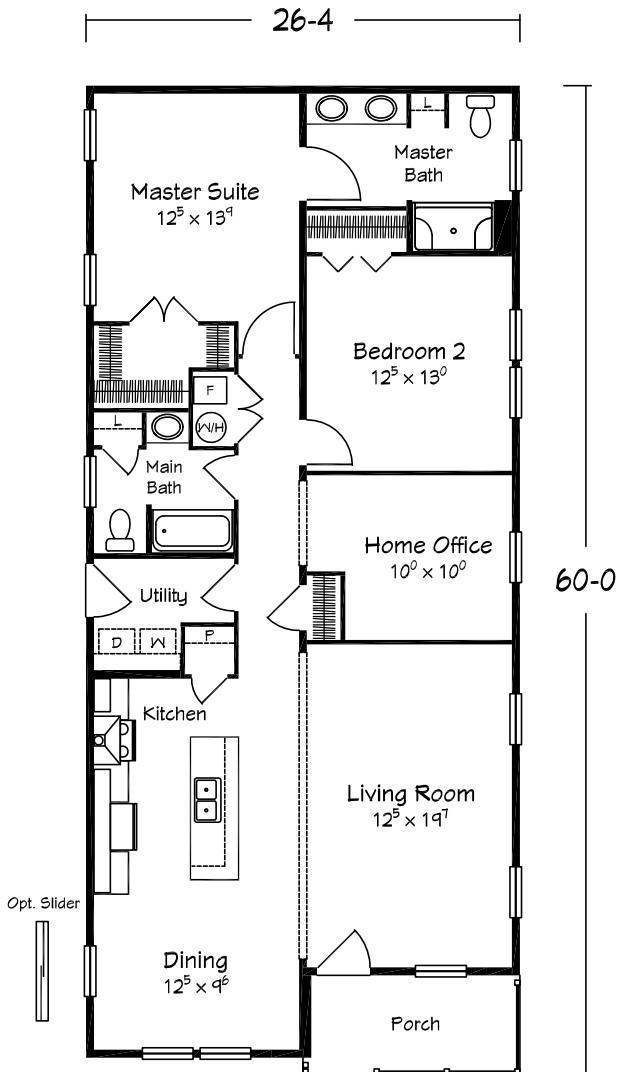
· 2 BRs · Home Office · 2 Baths

GABLE ENTRY MULTI-SECTION HOMES

Fraser

Model 2760

1496 sq. ft. · Porch 76 sq. ft.
 · 2 BRs · Home Office · 2 Baths



Cedar

Model 2766

1562 sq. ft. · Porches 70 & 79 sq. ft.
 · 3 BRs · 2 Baths



Your approved
ValueCraft
Homebuilder:



Approved homebuilders are independent business entities and are not agents of ValueCraft.
Due to occasional updating of building codes and ValueCraft's continuous product improvement, specifications are subject to change without prior notification. Be sure to refer to Value Craft "Standard Specifications" from your selected homebuilder.
Floorplans and renderings are ©2023 ValueCraft. 0124